

Shaping the future

Your Vision for Conlig



Since May 2024 Ards and North Down Borough Council have been undertaking a comprehensive engagement process to develop a new Conlig Village Plan.

The engagement process was designed to gather a diverse range of input through various methods, including public workshops, involvement of community groups and local schools, engagement at public events, on-street surveys and online surveys. This approach helped to ensure all members of the community were provided an opportunity to share their views.



- Thank you for your participation in the engagement process and the invaluable feedback you provided.
- Did you meet us at Conlig Community Hall on Monday 24 June 2024 when we held a public engagement drop-in session?
- Did you catch us in your village completing on-street surveys, or did you complete your survey online?

We have collated all the information received through the various forms of engagement and developed a series of proposed priorities and actions. Please have a read and tell us what you think. Feedback can be provided online at www.ardsandnorthdown.gov.uk/article/2141/Current-Engagement-Opportunities or scan the QR code.



Closing date for feedback on proposals: 12noon on Friday 28 February 2025

For further information visit www.ardsandnorthdown.gov.uk/villageplans or email us at village.plans@ardsandnorthdown.gov.uk

To keep up to date on the latest developments, sign up for the Village Plan Newsletter, by emailing *Subscribe* to village.plans@ardsandnorthdown.gov.uk

Shaping the future

How you
currently view
Conlig...

What you told us is desirable about Conlig...

- The **location** of Conlig, with easy access to surrounding larger settlements as well as green spaces, was highlighted as the most desirable aspect of Conlig. Residents appreciate the semi-rural location, with proximity to both urban and rural areas. The location provides access to the convenience of services and job opportunities offered in urban areas, whilst having nature on your doorstep at the same time.
- The **strong community spirit** in Conlig was identified as another desirable aspect of the village. Respondents highlighted that there is a closeknit, friendly community spirit, creating a strong sense of belonging within the village.
- The **access to green spaces and opportunities for outdoor recreational activities** was also highlighted as a highly desirable factor of Conlig. The abundance of surrounding green spaces such as the reservoirs, Clandeboye estate and Helen's Tower, offer scenic views and great opportunities particularly for walking.
- Finally, residents appreciate the **quiet and peaceful atmosphere** in Conlig. The semi-rural location and small scale, creates a tranquil atmosphere, appealing to people of all ages in search of a quieter life.



What you think are the Unique Selling Points for Conlig...

- 1 **Green and Blue Connections** were seen as the key unique selling points of Conlig, with the Reservoirs, Clandeboye Estate, Helen's Tower, the Lead Mines and the Ulster Way providing great access to recreational opportunities such as walking, cycling and fishing.
- 2 **The Clandeboye Golf Club**, which is situated immediately east of Conlig, was identified as another unique attraction. The club offers two courses in the picturesque rural surroundings of Lady Dufferin's Estate and features a club restaurant and bar, providing for both golfers and other visitors
- 3 The small village has a **rural feel but is conveniently located** within close proximity to Newtownards and Bangor and with strong commuter links to Belfast. The quaintness of the village combined with the prime location, creates excellent opportunities for those seeking a quieter life but with easy access to larger settlements.

For further information visit www.ardsandnorthdown.gov.uk/villageplans or email us at village.plans@ardsandnorthdown.gov.uk

To keep up to date on the latest developments, sign up for the Village Plan Newsletter, by emailing *Subscribe* to village.plans@ardsandnorthdown.gov.uk

Shaping the future

Why you think people visit Conlig...

How you feel about Conlig...

29 respondents shared their **positive** feelings about the Village, some of the comments received:

"I love it and respect it"

"I personally love Conlig, it is where I grew up and where I have decided to raise my family. It is quiet and we are very content here."

"I love living here. Perfect location to raise a family."

"I love the peacefulness of the village."

"Very proud of the village and the way people come together when needed."

31 respondents shared their **negative** feelings about the Village, some of the comments received:

"Ignored"

"Bored as there's nothing to do and nowhere to go."

"Sad. It has nothing to make it feel like a village – no central garden, no real community space, no centre"

"I used to be proud of living here since I grew up here from I was 11. Now, I can see how neglected it has become and how scrappy it is starting to look."

"We are moving because it feels out of the way of everything. Not much in it for children to do"

"Dog fouling on the main footpaths through Conlig is particularly bad."



What you told us is undesirable about Conlig...

- The main undesirable regarding the village was the **lack of ongoing maintenance**, this focused on litter, dog waste and overgrown weeds.
- The **lack of adequate facilities** in the village, the absence of youth-orientated amenities, the lack of primary school and a safe green area to meet and play was widely acknowledged as significant concern.
- Respondents identified **traffic** as a significant issue, primarily due to the high volume of vehicles, excessive speeds, lack of bus shelter, location of bus stop and narrow footpaths, which collectively contribute to safety concerns.
- Concerns were expressed regarding the **condition of the existing infrastructure**, issues such as poor pavement conditions, potholes and lack of adequate footpaths. Residents are very concerned about exit/entrance at both ends of the village from the busy Newtownards to Bangor Road.

For further information visit www.ardsandnorthdown.gov.uk/villageplans or email us at village.plans@ardsandnorthdown.gov.uk

To keep up to date on the latest developments, sign up for the Village Plan Newsletter, by emailing *Subscribe* to village.plans@ardsandnorthdown.gov.uk

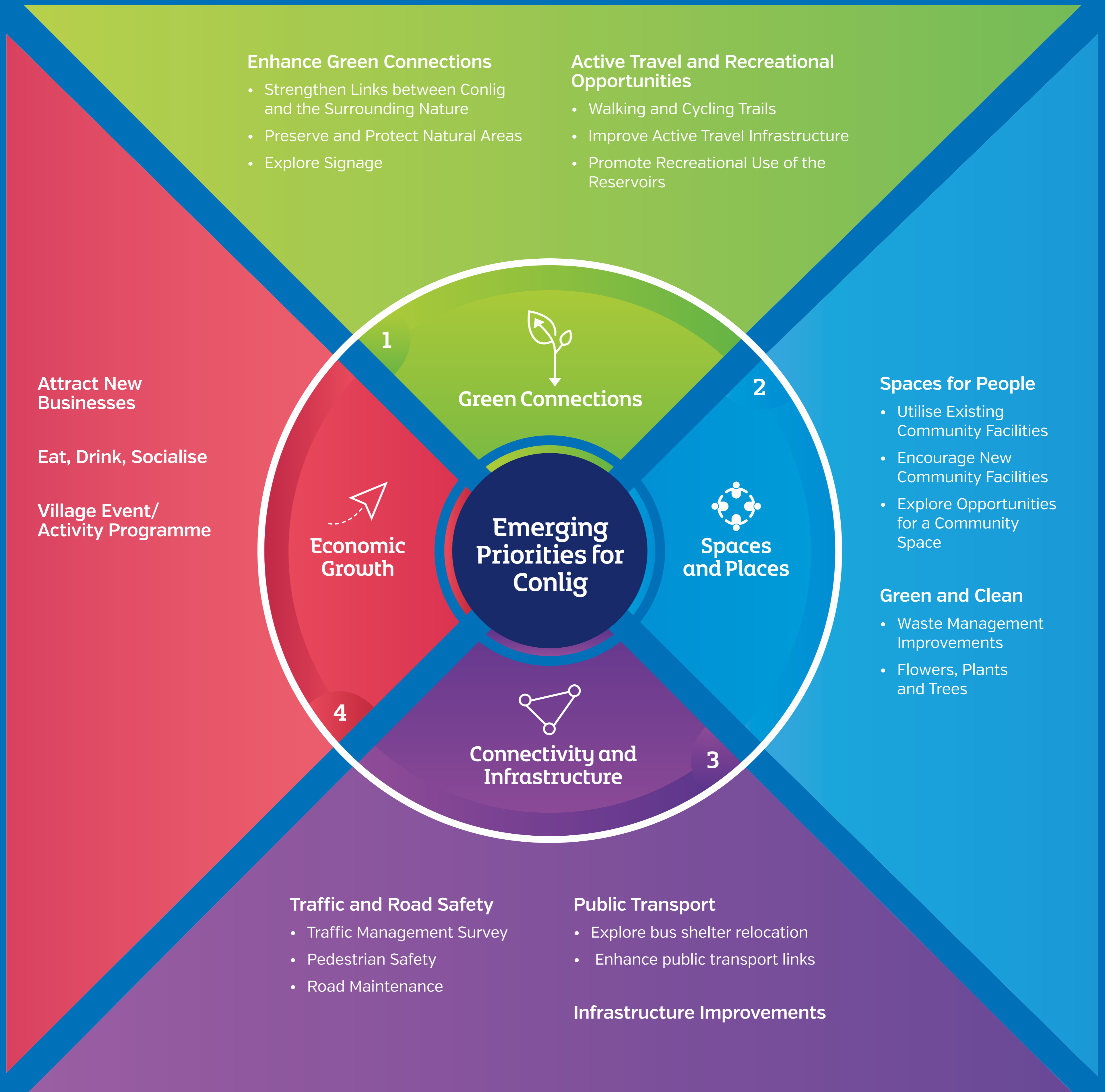
Shaping the future



The Vision

“To be a sustainable village which is a thriving place for people to do business, socialise, shop, be creative and use public services as well as being a great place to live”

High Street Task Force, NI Executive



For further information visit www.ardsandnorthdown.gov.uk/villageplans or email us at village.plans@ardsandnorthdown.gov.uk

To keep up to date on the latest developments, sign up for the Village Plan Newsletter, by emailing *Subscribe* to village.plans@ardsandnorthdown.gov.uk