

# Shaping the future

## Your Vision for Greyabbey



**Since May 2024 Ards and North Down Borough Council have been undertaking a comprehensive engagement process to develop a new Greyabbey Village Plan.**

The engagement process was designed to gather a diverse range of input through various methods, including public workshops, involvement of community groups and local schools, engagement at public events, on-street surveys and online surveys. This approach helped to ensure all members of the community were provided an opportunity to share their views.



Primary School Drawing Competition winners with Mayor of Ards and North Down, Alistair Cathcart Bangor City Hall 2024.

- Thank you for your participation in the engagement process and the invaluable feedback you provided.
- Did you meet us at Greyabbey Village Hall on the 27 June 2024 when we held a public engagement drop-in session?
- Did you catch us in your village completing on-street surveys, or did you complete your survey online?
- We enjoyed a visit to Grey Abbey Primary School where we met with pupils for an interactive engagement session and a drawing competition.

We have collated all the information received through the various forms of engagement and developed a series of proposed priorities and actions. Please have a read and tell us what you think. Feedback can be provided online at [www.ardsandnorthdown.gov.uk/article/2141/Current-Engagement-Opportunities](http://www.ardsandnorthdown.gov.uk/article/2141/Current-Engagement-Opportunities) or scan the QR code.



Closing date for feedback on proposals: 12noon on Friday 28 February 2025

For further information visit [www.ardsandnorthdown.gov.uk/villageplans](http://www.ardsandnorthdown.gov.uk/villageplans) or email us at [village.plans@ardsandnorthdown.gov.uk](mailto:village.plans@ardsandnorthdown.gov.uk)

To keep up to date on the latest developments, sign up for the Village Plan Newsletter, by emailing *Subscribe* to [village.plans@ardsandnorthdown.gov.uk](mailto:village.plans@ardsandnorthdown.gov.uk)







# Shaping the future

## Why you think people visit Greyabbey...

### How you feel about Greyabbey...

30 respondents shared their **positive** feelings about the Village, some of the comments received:

*“I love it”*

*“It’s home”*

*“It’s been my home for over 60 years, and I have no plans to leave it because I love everything about it”*

*“I love my village and feel very protective of it”*

*“Proud to live here to be part of lovely community spirit”*

15 respondents shared their **negative** feelings about the Village, some of the comments received:

*“Not as well kept as when we first moved here”*

*“It’s forgotten about by the Council”*

*“Tired, bored, abandoned”*

*‘Could have more for children’*

*“Feels like facilities have not improved for years”*



### What you told us is undesirable about Greyabbey ...

- The main undesirable regarding the village was the **lack of ongoing maintenance**, this focused on litter, dog waste and overgrown weeds.
- The **lack of adequate facilities** in the village, particularly the condition of the public toilets, the absence of youth-orientated amenities, and the poor condition of the play park was widely acknowledged as significant concern.
- Respondents identified **traffic and car parking** as significant issues, primarily due to the high volume of vehicles, excessive speeds and insufficient car parking facilities, which collectively contribute to safety concerns.
- Concerns were expressed regarding the **condition of the existing Infrastructure**, issues such as poor pavement conditions, potholes and lack of adequate footpaths.
- Respondents acknowledge the prevalence of **dereliction and vacancy** within the village, both residential and commercial.



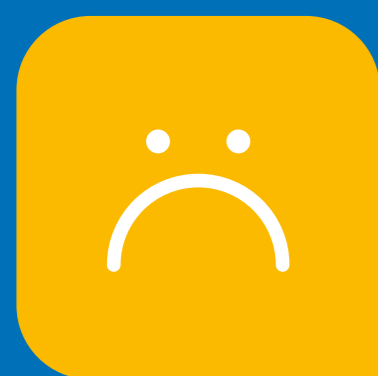
# Shaping the future

How the young people of Greyabbey describe their village...



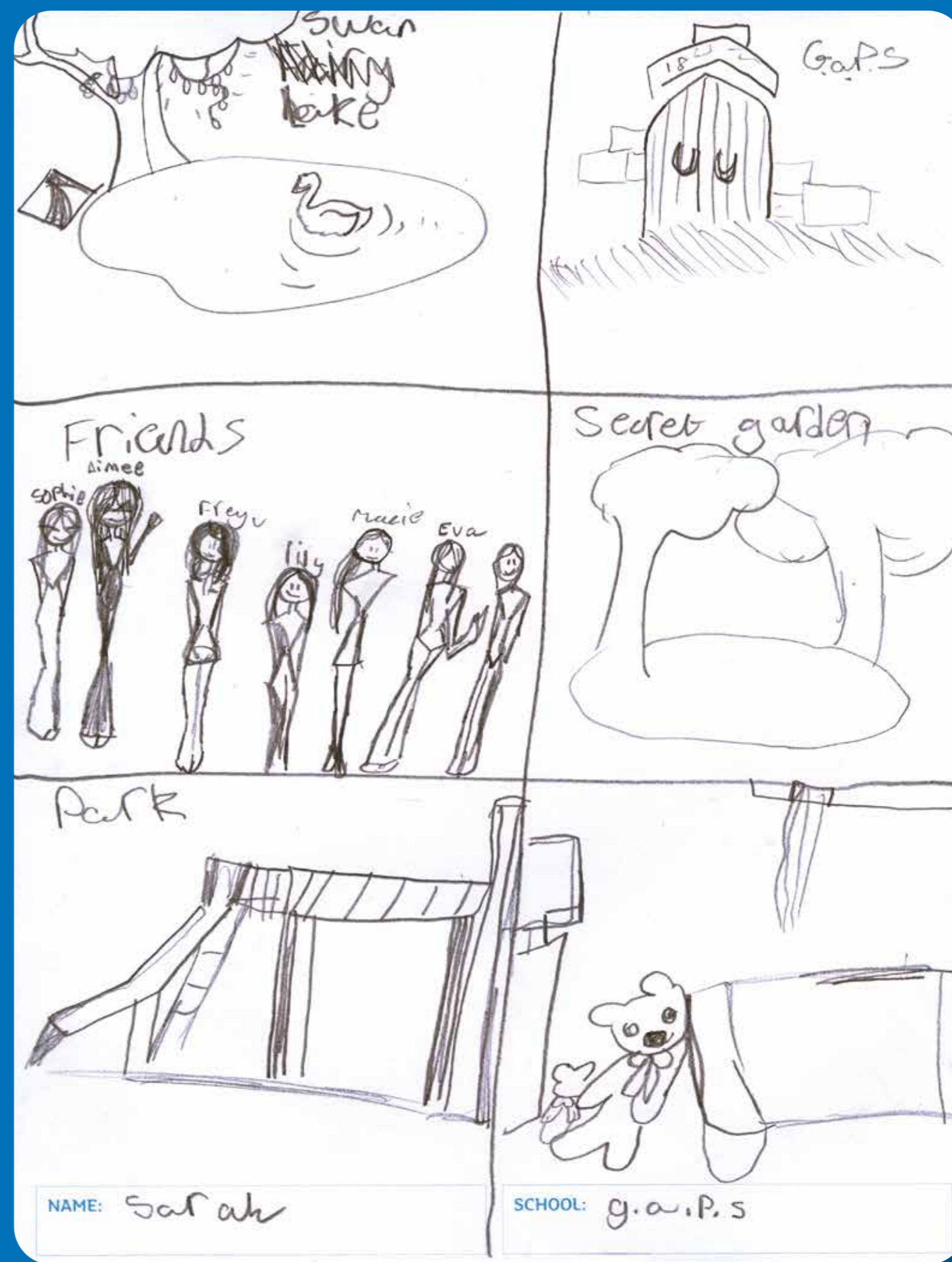
What the young people of Greyabbey like about their village...

- ✓ **Local Businesses**  
Coffee Shops | Cafés | Antique Shops  
Vivo | Takeaway
- ✓ **Attractions / Facilities**  
Football Pitches and Village Hall
- ✓ **Green Spaces**  
The Forest | Greba Gardens | Bluebell Walk
- ✓ **Community**  
The People
- ✓ **Heritage**  
Church | Abbey | War Memorial  
Rosemount House | Orange Hall



What the young people of Greyabbey do not like about their village...

The young people expressed concerns about the maintenance of their village, particularly issues with dog waste and litter. Additionally, they voiced concern over the limited eateries.



Greyabbey Primary School – Competition Winner  
“Draw what you think makes your village the best”



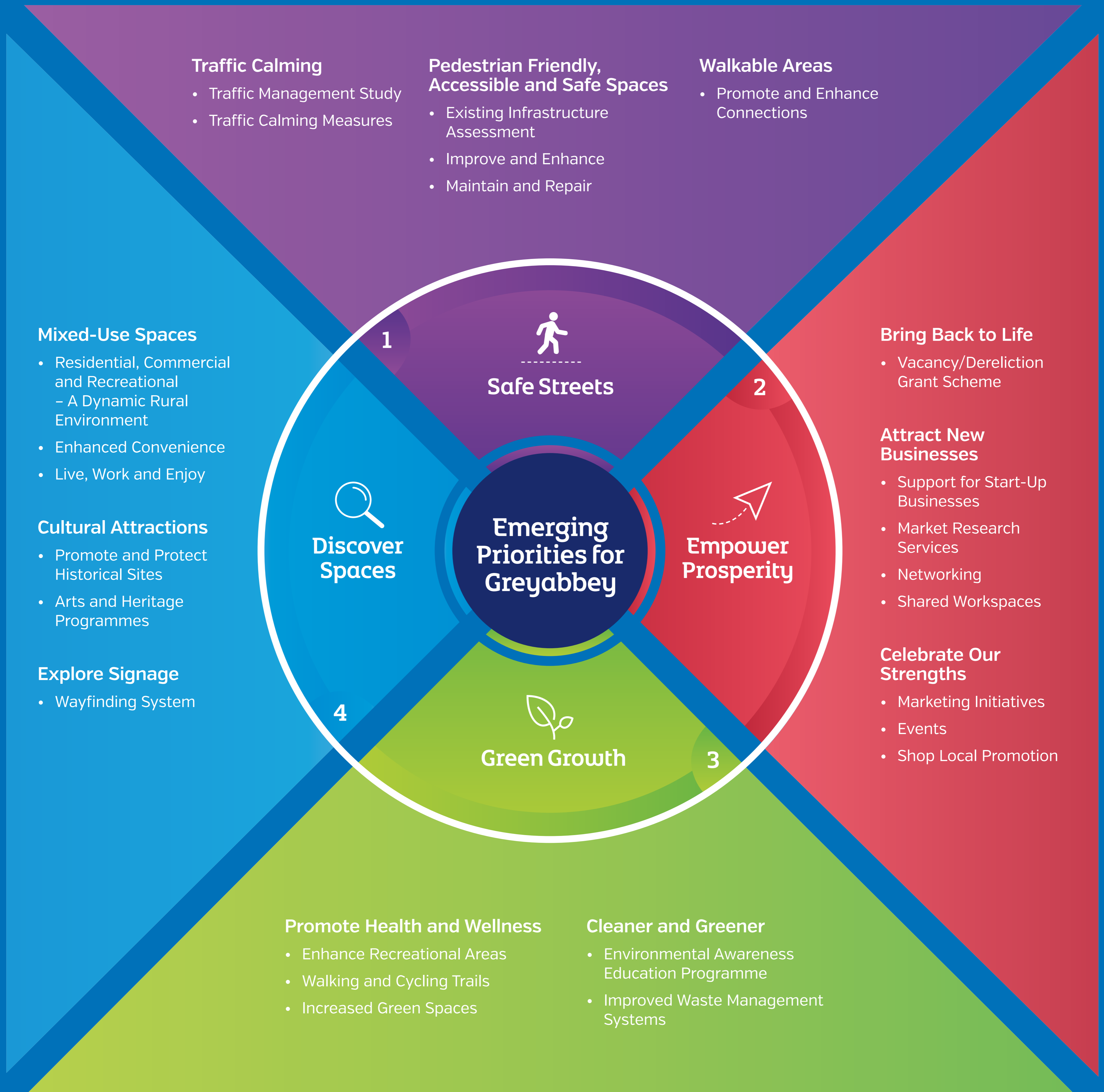
# Shaping the future



## The Vision

“To be a sustainable village which is a thriving place for people to do business, socialise, shop, be creative and use public services as well as being a great place to live”

High Street Task Force, NI Executive



For further information visit [www.ardsandnorthdown.gov.uk/villageplans](http://www.ardsandnorthdown.gov.uk/villageplans) or email us at [village.plans@ardsandnorthdown.gov.uk](mailto:village.plans@ardsandnorthdown.gov.uk)

To keep up to date on the latest developments, sign up for the Village Plan Newsletter, by emailing *Subscribe* to [village.plans@ardsandnorthdown.gov.uk](mailto:village.plans@ardsandnorthdown.gov.uk)