

# Shaping the future

## Your Vision for Killinchy



**Since May 2024 Ards and North Down Borough Council have been undertaking a comprehensive engagement process to develop a new Killinchy Village Plan.**

The engagement process was designed to gather a diverse range of input through various methods, including public workshops, involvement of community groups and local schools, engagement at public events, on-street surveys and online surveys. This approach helped to ensure all members of the community were provided an opportunity to share their views.



Primary School Drawing Competition winners with Mayor of Ards and North Down, Alistair Cathcart Bangor City Hall 2024.

- Thank you for your participation in the engagement process and the invaluable feedback you provided.
- Did you meet us at Killinchy Village Hall on Thursday 8 August 2024 when we held a public engagement drop-in session?
- Did you catch us in your village completing on-street surveys, or did you complete your survey online?
- We enjoyed a visit to Killinchy Primary School where we met with pupils for an interactive engagement session and a drawing competition.

We have collated all the information received through the various forms of engagement and developed a series of proposed priorities and actions. Please have a read and tell us what you think. Feedback can be provided online at [www.ardsandnorthdown.gov.uk/article/2141/Current-Engagement-Opportunities](http://www.ardsandnorthdown.gov.uk/article/2141/Current-Engagement-Opportunities) or scan the QR code.



Closing date for feedback on proposals: 12noon on Friday 28 February 2025

For further information visit [www.ardsandnorthdown.gov.uk/villageplans](http://www.ardsandnorthdown.gov.uk/villageplans) or email us at [village.plans@ardsandnorthdown.gov.uk](mailto:village.plans@ardsandnorthdown.gov.uk)

To keep up to date on the latest developments, sign up for the Village Plan Newsletter, by emailing *Subscribe* to [village.plans@ardsandnorthdown.gov.uk](mailto:village.plans@ardsandnorthdown.gov.uk)



# Shaping the future

How you  
currently view  
Killinchy...



## What you told us is desirable about Killinchy...

- Whilst retaining the feeling of a quaint and peaceful rural village, residents consider the **provision of local facilities and amenities** as the most desirable aspect of Killinchy. The local play park, Killinchy Primary School and the local churches were identified as highly desirable aspects of the village. The village also enjoys proximity to a variety of celebrated pubs and restaurants.
- The **location** of Killinchy was identified as highly desirable with the area often described by residents as rural, scenic, picturesque and beautiful. The **proximity to nearby green and blue connections** around Strangford Lough was also highlighted, providing access to an array of leisurely activities in and around the water, surrounded by beautiful landscapes and wildlife.
- Killinchy was also identified as having a **strong sense of local community**, with people describing it as friendly, close-knit and a place where people care for each other.

## What you think are the Unique Selling Points for Killinchy...

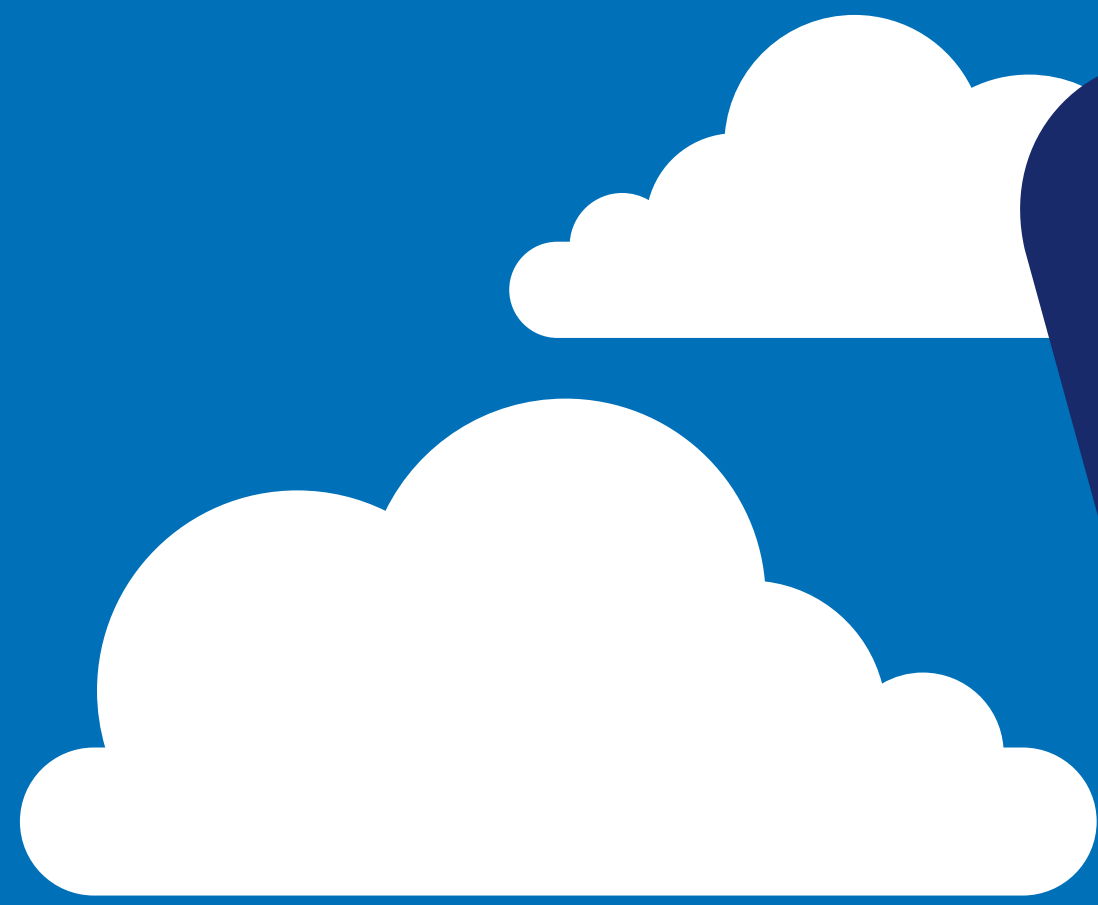
- 1 Killinchy has a unique location that offers a **winning combination of different amenities**. This includes highly rated restaurants, the area of outstanding natural beauty around Strangford Lough, as well as proximity to Belfast for commuting purposes. As such, many respondents felt that rather than one distinct feature, it is this combination of factors that constitutes Killinchy's main unique selling point.
- 2 The **proximity to Whiterock and Strangford Lough** was identified as a key strength, offering opportunities for leisurely activities both in the water and in the surrounding natural landscapes.
- 3 Residents also emphasised the provision of **local facilities and amenities** as a key selling point. This includes facilities such as the local primary school, the play park and restaurants in the area.

For further information visit [www.ardsandnorthdown.gov.uk/villageplans](http://www.ardsandnorthdown.gov.uk/villageplans) or email us at [village.plans@ardsandnorthdown.gov.uk](mailto:village.plans@ardsandnorthdown.gov.uk)

To keep up to date on the latest developments, sign up for the Village Plan Newsletter, by emailing *Subscribe* to [village.plans@ardsandnorthdown.gov.uk](mailto:village.plans@ardsandnorthdown.gov.uk)



# Shaping the future



Why you think people visit Killinchy...



## How you feel about Killinchy...

39 respondents shared their **positive** feelings about the Village, some of the comments received:

*"Love living here and have done for nearly 36 years"*

*"It has wonderful natural beauty and is a great rural place to live. It is a friendly village with a good community spirit supported by the churches and the people who live here"*

*"Happy that it generally is a very safe place to live"*

*"It is a great place to live – a beautiful environment – yet still close to main towns and city"*

*"My love for it is growing as I get to know the people in it better. Been 4 years in the village"*

*"It is a great place to live and raise kids"*

29 respondents shared their **negative** feelings about the Village, some of the comments received:

*"I love my village and truly believe that other villagers love it too. There's a real sense of community here, but it really frustrates us all to see just how neglected and underappreciated the place is"*

*"Very concerned about increasing number of flags being flown"*

*"Lovely place to live but needs TLC"*

*"I feel it needs a really good tidy up"*

*"Needs work done to the roads. Speed limit"*

## What you told us is undesirable about Killinchy...

- The most undesirable aspect of Killinchy was identified as **traffic and road infrastructure**. Many respondents highlighted that an increase in heavy traffic, particularly from HGVs, going through the small village roads has led to issues of speeding, impacting pedestrian safety and putting increased pressure on the road, leading to an increase in potholes.
- **Maintenance** was highlighted as an issue, with overgrown grass and hedges raised as the main concern, particularly in areas where these obstruct footpaths and road signs causing safety issues. Other issues such as dog fouling, rubbish and lack of bins were raised to a lesser extent.
- While the play park and football pitch were generally recognised as a desirable aspect of the village, residents noted issues around **upkeep of the football pitch** and highlighted the **lack of toilet facilities by the playpark** as main concerns.
- The **lack of public transport** was highlighted as a key issue, with limited bus routes and thereby a high level of car dependency across the village. In terms of other means of transportation, others also highlighted the **lack of safe pedestrian and cycling facilities** along the roads.
- In terms of the visual appeal of the area, many residents also raised their concerns over the **presence of flags**, which many describe as being flown overnight without consent from the wider community. A few people additionally highlighted concerns around **potential overdevelopment of the area** and lack of floral displays to bring life and colour back into the village.

For further information visit [www.ardsandnorthdown.gov.uk/villageplans](http://www.ardsandnorthdown.gov.uk/villageplans) or email us at [village.plans@ardsandnorthdown.gov.uk](mailto:village.plans@ardsandnorthdown.gov.uk)

To keep up to date on the latest developments, sign up for the Village Plan Newsletter, by emailing *Subscribe* to [village.plans@ardsandnorthdown.gov.uk](mailto:village.plans@ardsandnorthdown.gov.uk)



# Shaping the future

How the young people of Killinchy describe their village...



What the young people of Killinchy like about their village...

- ✓ **Amenities**  
Play Park | Football Pitch
- ✓ **Community**  
The Friendly People
- ✓ **Local Shops and Nearby Restaurants**



What the young people of Killinchy do not like about their village...

The main concern raised by young people in Killinchy was issues around the play park and the football pitch. Mainly, the young people raised that there are holes and bumps in the football pitch, making it difficult to play safely.

The young people also identified lack of safe pedestrian crossings along the roads, potholes and overgrown grass as concerns.



Killinchy Primary School – Competition Winner  
“Draw what you think makes your village the best”



# Shaping the future



## The Vision

“To be a sustainable village which is a thriving place for people to do business, socialise, shop, be creative and use public services as well as being a great place to live”

High Street Task Force, NI Executive



For further information visit [www.ardsandnorthdown.gov.uk/villageplans](http://www.ardsandnorthdown.gov.uk/villageplans) or email us at [village.plans@ardsandnorthdown.gov.uk](mailto:village.plans@ardsandnorthdown.gov.uk)  
To keep up to date on the latest developments, sign up for the Village Plan Newsletter, by emailing *Subscribe* to [village.plans@ardsandnorthdown.gov.uk](mailto:village.plans@ardsandnorthdown.gov.uk)